



JEFFERSON
COUNTY COLORADO
Public Health

Local Collaborative Planning and Implementation

Melissa Palay, MPH, MSN, RN

August 24, 2021

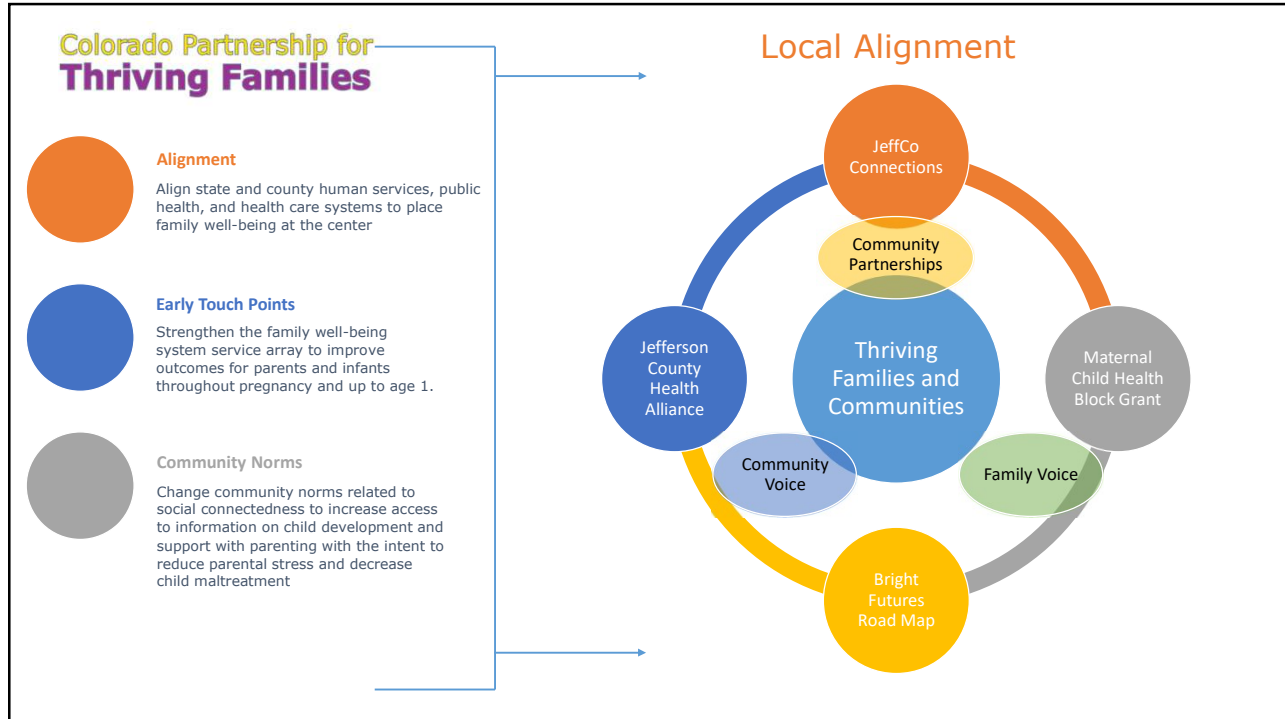
1

Learning Objectives

- Learn about multiple collaborative community plans, their processes and implementation in Jefferson County including:
 - Jeffco LAUNCH Together
 - Jeffco's Bright Future's Road Map
 - Jefferson County's Child Maltreatment Prevention Plan
- Describe how planning processes included community and stakeholder feedback, successes and areas for improvement for future initiatives
- Describe strategies to align plans to leverage funding and other community resources



2

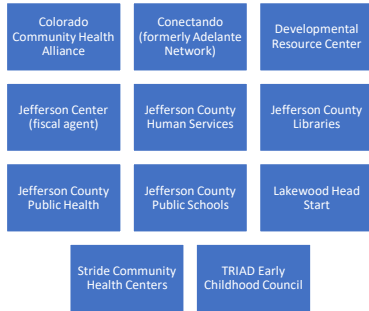


3



4

Jefferson County's LAUNCH Together Partners



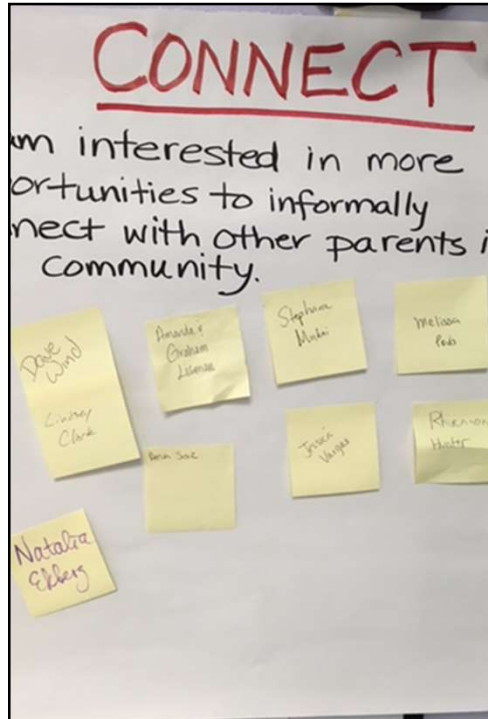
5

Community Based Participation

- Share and Connect
- Conectando
- Surveys: Leveraging relationships



6



Overview- Share & Connect Family Engagement

- **Family Engagement Workgroup**
 - Public Health, Jefferson Center, Triad Early Childhood Council,
 - Human Services, Edgewater Collective
 - Seek family input on LAUNCH goals and activities, while providing opportunities to connect authentically
- **Target area:** 80214, Edgewater, Wheat Ridge, Lakewood
- **Event Details**
 - Model: Community Based Participatory Research & Health Promotion
 - Recruited through our partner ECE and HV programs by personal invitation
 - Facilitated table discussions in English and Spanish; dinner + child care
 - Concurrent survey distributed through home visitors for parents who could not attend event
 - Exit Wall

7



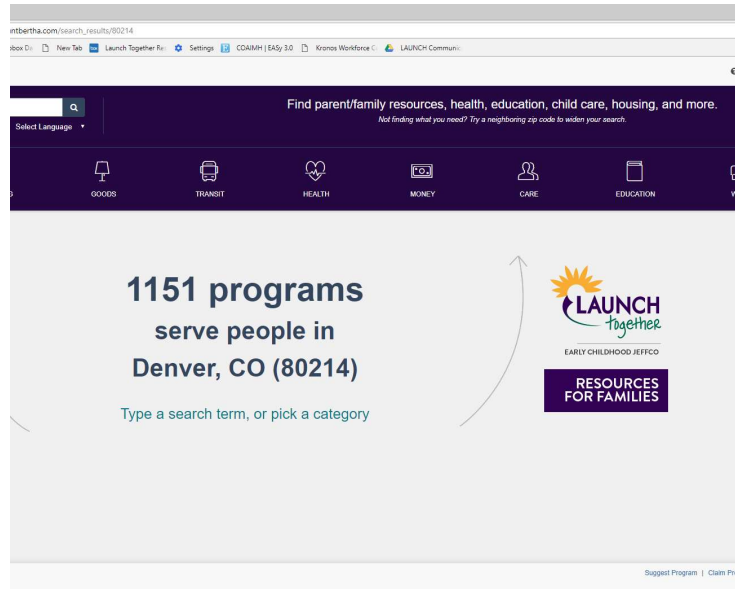
The Data Story

- **Three Guiding questions for locally-collected data**
 - *What information and supports do parents/caregivers need?*
 - *How do parents/caregivers want to receive information about parenting and resources?*
 - *How can we impact change in our local early childhood system?*
- **Qualitative and Quantitative data**
- **Data Gallery Walk** with parent leaders

8

Results & Reflections

- Preliminary Results**
 - Culturally-responsive, easily accessible services
 - Parents like **technology** but they also want to **connect**
 - Single website** for resources; help navigating resources
- After Data Gallery Walk**
 - Address lack of culturally-relevant services and communication issues with school district, particularly around Exceptional Student Services
 - Host neighborhood Resource Fairs-partner with Jeffco Libraries
 - Develop a single website for Jeffco Families– one-stop-shop hub for resources; start with Aunt Bertha pilot project (Visit “**jeffcofamilies.org**” for a preview)



9

Jeffcofamiliescolorado.org

JEFFCO Families COLORADO

- SUPPORT CHILDREN'S EARLY LEARNING
- CHILD CARE IN JEFFCO
- PERINATAL MENTAL HEALTH
- IN-HOME PARENTING SUPPORT
- HOW TRAUMA IMPACTS THE BRAIN
- EARLY CHILDHOOD SCREENINGS: FAQ
- LATEST IN EARLY CHILDHOOD



LEARN ABOUT CHILD DEVELOPMENT AT EVERY AGE



10



All families benefit from extra support when a baby is born and as our children grow!

Contact the Jeffco Family Navigator to connect with the parenting support that's right for you!

Jeffco Family Navigator

- Centralized intake and referral for early childhood family supports including home visitation
- What to expect:
 - Bilingual Family Navigator will call and assess the family's strengths, needs, and goals for participating in a home visiting program
 - Refer to the program that best matches that family
 - Closed referral loop
 - Referral to other resources and services as appropriate
- How to refer:
 - <https://jcpirc.jeffco.us/surveys/?s=YLCHRFLDD8>

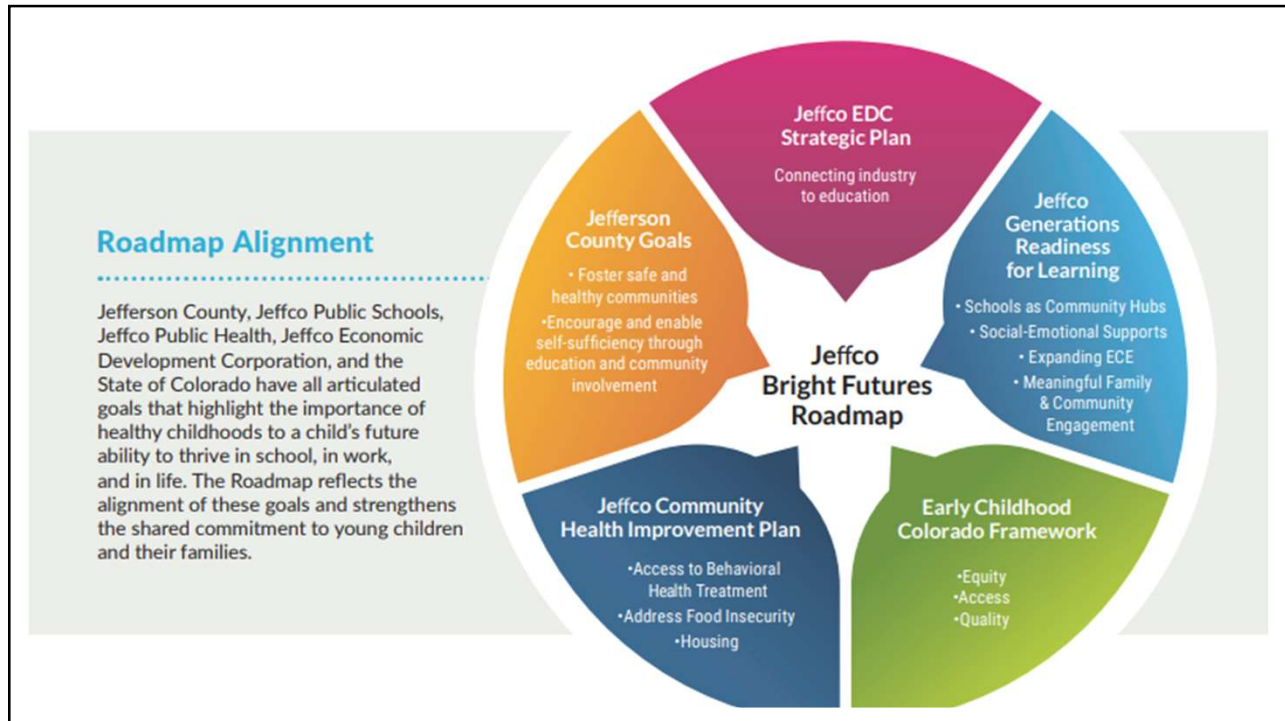
11

Local Lessons

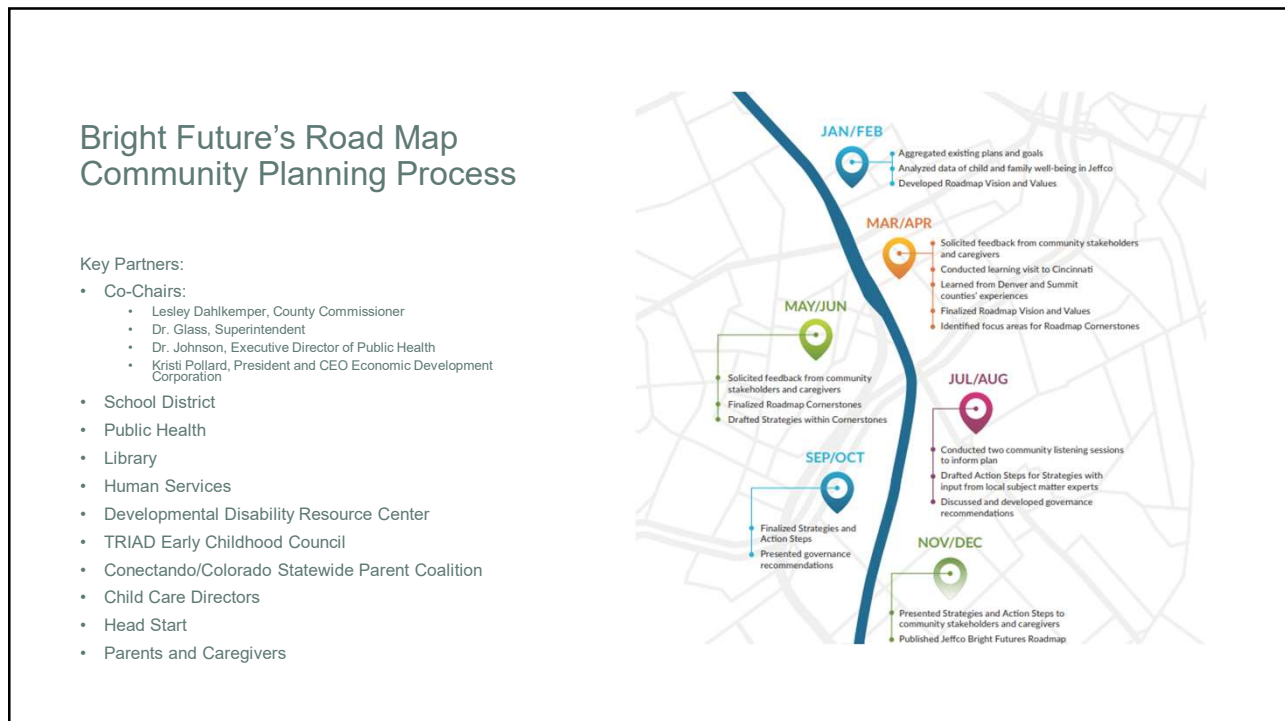
- ✓ **RELATIONSHIPS ARE CRUCIAL.** It takes time to develop the trust and understanding for effective collaboration throughout the community
- ✓ **FLEXIBLE AND REPRESENTATIVE LEADERSHIP DRIVES IMPLEMENTATION.** Partners must be willing to self-reflect, accept external feedback, and be open to transforming organizational processes in the service of shared goals.
- ✓ **PAYMENT REFORM IS NECESSARY.** Until changes to public funding models (i.e., Medicaid) are made, efforts toward collaborative prevention and health promotion strategies will turn to philanthropic sources. As these sources are unreliable as long-term options, public funding allocations for early childhood mental health programs are needed to promote sustainability across the sector.
- ✓ **COMMUNITY ENGAGEMENT MUST BE CULTURALLY RESPONSIVE.** Service providers need to demonstrate an authentic commitment to continuously listen, reflect, and honor cultural differences
- ✓ **SUSTAINING COLLABORATION TAKES INTENTION.** Despite all the time invested in relationships and collaboration, it is easy to lose that after funding or even a key leader leaves.



12



13



14





Roadmap Vision and Values

To ensure that all Jefferson County families have the support they need to promote their children's health and well-being for sustained success in school and in life, helping to make a bright future for Jefferson County.

-  **Strong Families, Strong Community**
Thriving children and families are a critical part of a thriving community. Working together to nurture families from all backgrounds, abilities, and life circumstances is an important strategy to ensuring a bright future for Jefferson County.
-  **Equitable, High-Quality Experiences**
Quality prenatal care and early childhood experiences, delivered in an equitable manner, develop the social-emotional and cognitive skills all children need to be successful.
-  **Supported Adults Across Community**
Children will succeed with supported and engaged parents, caregivers, educators, health professionals and other adults. Partners across the community must be aligned and working toward shared goals to ensure adults are successfully supporting children.

-  **Sustained Commitment and Coordinated Services**
To be successful, Jefferson County leaders and community stakeholders must work together, across sectors and settings, and over the long-term to provide comprehensive education, prevention, early intervention, and treatment services.
-  **Continuous Improvement**
Using common metrics for success and data-driven evaluation, we can continue to improve supports and services to ensure Jefferson County is a great place to raise a family.

Transitioning from LAUNCH Together to the Bright Futures Road Map

BFRM Cornerstone	Aligned LAUNCH Activities	Outcomes
 <p>CORNERSTONE #1 Families in Jefferson County have a variety of high-quality early care and education options that meet their needs and are provided through a mixed-delivery system.</p>	<ul style="list-style-type: none"> • LAUNCH Early Childhood Mental Health Consultants provide social-emotional training & support for administrators and teachers in early learning settings, focused on strategies to improve provider knowledge & behavior, classroom environment, and child development. • Created JeffcoFamiliesColorado.org website to provide community access to local information and resources. 	<p>In Y3, 105 ECE providers were trained on early childhood topics</p> <p>Between January-June 2020, JeffcoFamiliesColorado.org had 5,564 unique pageviews</p>
 <p>CORNERSTONE #2 Families in Jefferson County are supported in their roles as children's first and most important teachers through an array of home visitation services that meet their diverse needs.</p>	<ul style="list-style-type: none"> • Current pilot of community-based bilingual Family Navigator, serving as a central point of intake, assessment & referral to Home Visitation programs; uniting JeffcoFamiliesColorado.org website and customized Aunt Bernita platform for referral coordination & loop closure. • Two ECMHCs providing monthly social-emotional consultation, training on early childhood topics, and staff support to HIV programs. 	<p>Family Navigator began mid-March 2020</p> <p>Through LAUNCH, Jeffco Home Visitors received 404 hours of case consultation & 800 hours of Reflective Supervision</p>
 <p>CORNERSTONE #3 Programs and providers in Jefferson County have access to mental health consultation in order to fully support families' social-emotional well-being.</p>	<ul style="list-style-type: none"> • Two ECMHCs available to train on early childhood social-emotional topics for any community partners, increasing awareness, skill, & capacity across Jeffco. • ECMHCs provide consultation to early care providers across settings (licensed centers, home-based care). • ECMHCs receive regular Reflective Supervision. • Developed print & virtual materials promoting provider & parent education on milestones & enrichment of early childhood social-emotional development (0-8). • Created JeffcoFamiliesColorado.org to promote public awareness of early childhood development, social-emotional health, and prevention strategies. 	<p>660 multidisciplinary early childhood providers (e.g., HVs, ECE teachers, child welfare caseworkers, therapists) and 61 families trained in Y3</p> <p>ECMHCs provided over 500 hours of consultation to early learning settings in Y3</p> <p>ECMHCs provided over 400 hours of consultation to HV providers</p>
 <p>CORNERSTONE #4 Jefferson County has a robust screening, assessment, and referral system that addresses physical, social-emotional, behavioral, and social determinants of health.</p>	<ul style="list-style-type: none"> • Established workflow between Jeffco Human Services, JCPH, and DDRRC (Early Intervention) to screen all CAPTA-eligible children for developmental delay & refer to EI as indicated. • Supplied and trained Stride CHC staff to implement ASQ:SE screenings. 	<p>An average of 550 children/year received early childhood developmental and/or social-emotional screenings (across Y2 & Y3)</p>

Child Maltreatment Prevention Plan

- Led by Jeffco Connections, the Collaborative Management Program in Jefferson County
 - Initiated in Fall 2019 and completed in June 2020 at the height of the COVID-19 pandemic and restrictions
 - External Facilitator
- Who Participated?
- Human Services
 - Public Health
 - Library
 - Early Childhood Council
 - Mountain Resource Center
 - School District
 - Jefferson Center for Mental Health
 - Others

17



18

ACTION
Channels for Change

- Strategies for Individualized Services**
 - Home Visiting
 - Parent Education
 - Mobility Mentoring and Financial Literacy
 - Respite and Crisis Care
 - Family Development and Goal Setting
 - Screening for Substance Abuse, Intimate Partner Violence, and Depression
- Strategies for Agency Collaboration and Community Capacity Building**
 - Integrated Care
 - Community Effects on Child Maltreatment and Strategies at the Community Level
 - Utilizing Technology
 - Early Learning Communities
- Strategies for Organizational and Practice Change**
 - Evidence-Based Practice
 - Implementation Science
 - Workforce Development
 - Performance Monitoring
- Strategies for Policy Reforms**
 - Policy Agenda Setting
 - Innovating Federal and State Health Care Funding
 - Transforming Existing Legislation to Better Meet the Needs of Families

19

FUTURE
Overarching Outcomes

- Child Well-Being and Achievement**
Maximize developmental potential of all children
INDICATORS
Well child check-ups, developmental screening, social emotional health, reading proficiency
- Consistent High-Quality Caregiving**
Ensure all caregivers foster positive child development
INDICATORS
Incidence of child maltreatment, early childhood professional credentials and quality rated child care, appropriate child development expectations, safe sleep practices, spending time together as a family, child welfare placement stability
- Caregiver Well-Being and Achievement**
Provide parents and other primary caregivers the support they need to succeed
INDICATORS
Financial security, educational attainment, social connections and screening for interpersonal violence/pregnancy-related depression/substance abuse
- Safe and Supportive Neighborhoods**
Create a context of collective responsibility to children
INDICATORS
Community cohesion, access to basic services, family friendly employment

20

Jefferson County's Child Maltreatment Prevention Plan

GOAL 1: Build knowledge of and capacity for Universal Home Visiting for families prenatal – age 5 to families requesting support and education through home visiting

GOAL 2: Strengthen awareness of and increase preventive access to affordable housing services and supports for families in the community to prevent homelessness and housing instability

GOAL 3: Within a defined geographic area, assure equitable access to concrete supports that improve upstream determinants which may positively impact the overall health and well-being of individuals in the area.

GOAL 4: Effectively communicate across Jefferson County the availability of resources and opportunities that Foster Strong Family Connections and Social Connectedness



21

Alignment

LAUNCH Together Goal 3:

Increase capacity* of already-existing home visitation programs by: 1) developing a coordinated system (or “canopy”) of communication and referral and 2) delivering better family support using mental health support and 2Gen strategies

Bright Futures Road Map Cornerstone 2:

Families in Jefferson County are supported in their roles as children’s first and most important teachers through an array of home visitation services that meet their diverse needs

Maltreatment Prevention Plan Goal 1:

Build knowledge of and capacity for Universal Home Visiting for families prenatal – age 5 to families requesting support and education through home visiting

22

What's Next?

- Continuing to support the Jeffcofamiliescolorado.org website and the Jeffco Family Navigator through Title V Maternal Child Health Block Grant
- Revival of the Bright Future's Road Map
- Colorado Partnership for Thriving Families: Demonstration Project

23

CO Partnership for Thriving Families: <https://copartnershipforthrivingfamilies.org/>

Vision: The Colorado Partnership for Thriving Families (the Partnership) works collaboratively across the State of Colorado to create the conditions for strong families and communities where children are healthy, valued and thriving.

Goal: The Partnership aims to significantly reduce child fatalities and child maltreatment for all children zero to five by positively and proactively supporting strong and healthy family formation.

Shared Values: The Partnership is motivated by and organized according to the following shared values:

- We act boldly.
- We use evidence and drive innovation.
- We transform the ways we work together:
 - ❖ We share power.
 - ❖ We work across systems and jurisdictions.
 - ❖ We are transparent in our interests and intentions.
 - ❖ We assume good intent and acknowledge our impact.

JEFFERSON
COUNTY COLORADO

24

Prioritizing Primary Prevention

Strategies reflect research on effective approaches to primary prevention and reducing disparities in family and child well-being.

Colorado Partnership for Thriving Families

Systems Alignment
Align state and county human services, public health, and health care systems to place family well-being at the center. Focus on funding, data, and policy across systems.

Early Touch Points
Strengthen the family well-being system service array to improve outcomes for parents and infants throughout pregnancy and the first year of life.

Community Norms
Change community norms related to social connectedness to increase access to information on child development and informal support with parenting with the intent to reduce parental stress and decrease child maltreatment

25

Colorado Partnership for Thriving Families

Alignment
Align state and county human services, public health, and health care systems to place family well-being at the center

Early Touch Points
Strengthen the family well-being system service array to improve outcomes for parents and infants throughout pregnancy and up to age 1.

Community Norms
Change community norms related to social connectedness to increase access to information on child development and support with parenting with the intent to reduce parental stress and decrease child maltreatment

Local Alignment

26

Thank You!

Melissa Palay
Associate Director Family Services,
Jefferson County Public Health
mpalay@jeffco.us | 303-275-7517